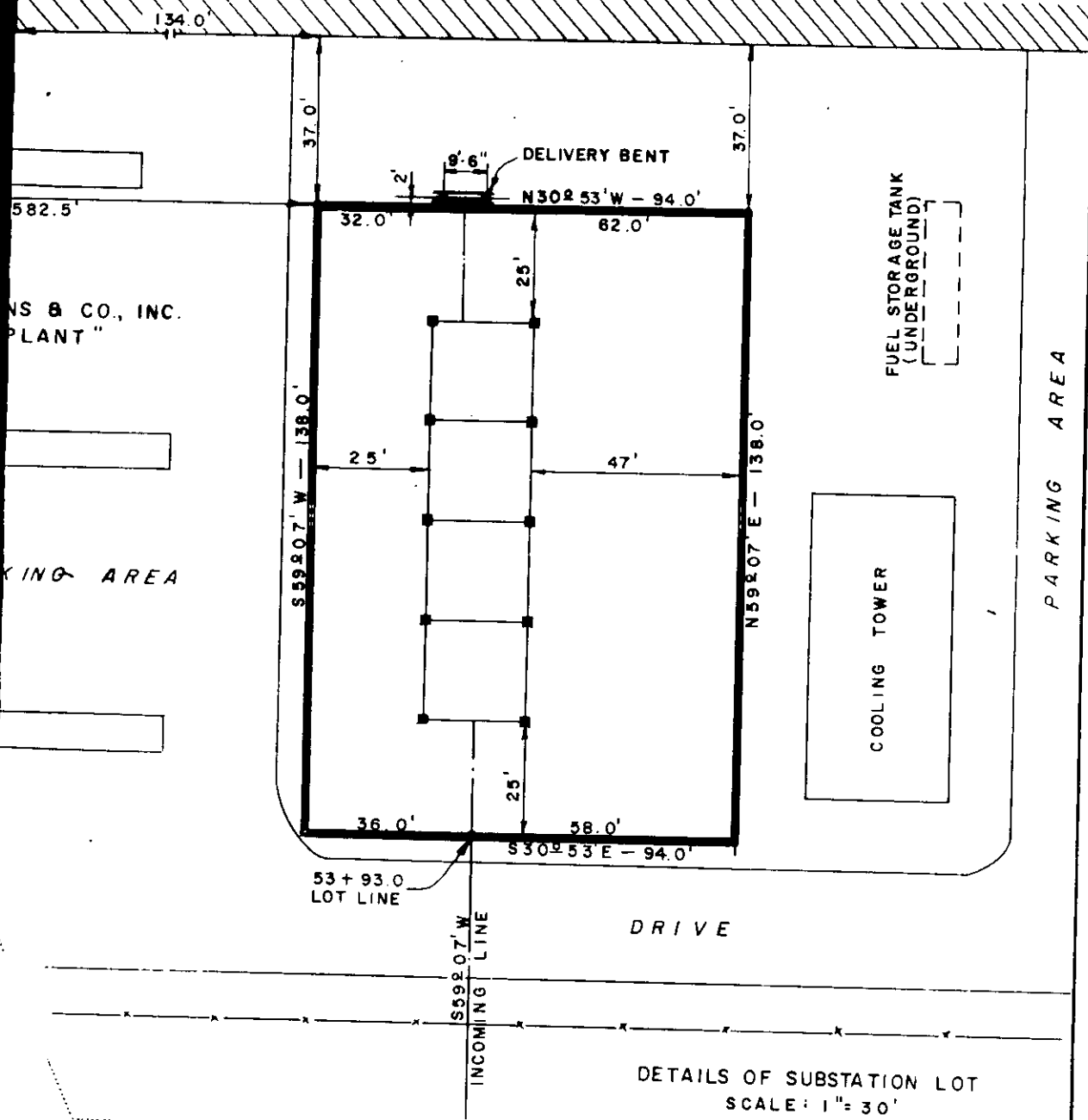


BOOK 712 12-380

J. P. STEVENS & CO., INC.
"ESTES PLANT"



DETAILS OF SUBSTATION LOT
SCALE: 1" = 30'

Recorded November 5th, 1963 at 9:30 A.M.
#13380

DUKE POWER COMPANY
SUBSTATION LOT
AND
TRANSMISSION LINE
TO SERVE
J. P. STEVENS & CO., INC
"ESTES PLANT"
PIEDMONT, S. C.
GREENVILLE COUNTY

SCALE: 1" = 300'
BOOK NO. 712

OCTOBER 7, 1963
FILE NO 154-132